

Installation Instructions

SaltDogg® PRO Series Electric Drive Poly Hopper Spreader

U.S. Patents 9,562,333

Table of Contents

General Information	1
Safety Precautions	1
Installation Instructions	1-5
Spreader Operation	6
Spreader Maintenance	6-7
Repair Parts & Drawings	7-26
Warranty Information	28

General Information

SPREADER MODELS	OVERALL LENGTH	OVERALL WIDTH	OVERALL HEIGHT	EMPTY WEIGHT	CAPACITY STUCK
PRO8000	141"	82"	64.2"	1,864 lbs.	8.0 cu. yd.
PRO8000CH	138"	82"	64.2"	2,020 lbs.	8.0 cu. yd.
PRO8000H	141"	82"	64.2"	1,722 lbs.	8.0 cu. yd.
PRO8000HCH	138"	82"	64.2"	2,020 lbs.	8.0 cu. yd.

Vehicle Requirements

SPREADER MODEL SERIES	TRUCK MINIMUM GVWR	ALTERNATOR MINIMUM AMPS
PRO8000	26,000 lbs.	150 AMP

Average Material Weights

This spreader is restricted to the use of dry, free-flowing salt, sand, and sand/salt mix. **Do not** run other materials through the spreader.

<u>Materials to use</u>	<u>Weight (pounds per cubic yard)</u>
Fine Salt-Dry	2,250
Coarse Salt-Dry	1,431
Sand/Salt up to 50/50 Mix-Dry	2,700

Note: To calculate the total spreader weight (including ice control material), add the empty spreader weight plus the ice control material and spreader accessories.

CAUTION

Do not overload vehicle beyond the vehicle's GVWR or GAWR. Check vehicle's load rating certification sticker for maximum vehicle capacity.

WARNING

Improper installation and operation could cause personal injury, and/or property damage. Observe the following Safety Precautions before, during and after operating this spreader. By following these precautions and common sense, possible injury to persons and potential damage to this machine may be avoided.

Safety Precautions

1. Read the entire Installation Instructions before operating or servicing this spreader.
2. Read and understand all safety decals on the spreader before operating.
3. Check to make sure all safety guards are securely mounted into place before operating this spreader.
4. Verify that all personnel are clear of the spreader spray area before starting or operating this spreader.
5. Do not over-load your vehicle beyond payload limits. If there are any questions, contact the vehicle manufacturer.
6. Do not adjust, clean, lubricate or unclog material jams without first turning off the spreader.
7. Do not climb on or in the spreader during operation. Do not ride on the spreader while the vehicle is in motion.
8. Make sure the spreader is securely fastened to the vehicle in accordance with this manual.
9. Do not operate a spreader that is in need of maintenance or repairs.
10. Do not operate the spreader while ill, tired, or under the influence of alcohol or drugs.
11. Batteries normally produce explosive gases which can cause personal injury. Always disconnect the battery before removing or replacing electrical components.
12. Do not leave unused material in hopper. Material can freeze or solidify, causing spreader to not work properly, and/or damage the unit. Empty and clean after each use.

Installation Instructions

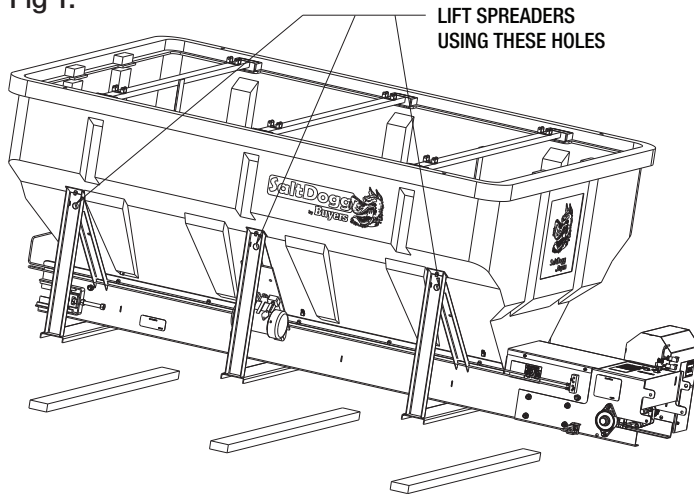
Mounting The Spreader Onto the Vehicle

- A.** Remove the tailgate from the vehicle (if equipped) as well as any other object which will interfere with the spreader.
- B.** Check truck's bed for all kinds of sharp debris or foreign objects. They can cut and seriously damage poly hopper.
- C.** Remove chute, hardware kit from inside spreader. If spreader has been used make sure there is no material left in the hopper.

D. Prepare 3 boards as shown in Fig. 1. Board size is 2" x 4" x 50" long minimum. Boards can be as long as width of inside of trucks body.

E. Next, set the spreader in the truck body. Use four bars on the frame to lift the spreader (Fig. 1).

Fig 1.



F. Lower spreader onto 2" x 4" boards positioned in truck bed.

G. Center the spreader on the vehicle with the end of the gear mount 14" to the rear of the nearest vertical obstruction (bumper, trailer hitch, etc). Attach chute to spreader, check for interference between the vehicle and the Spinner/Chute Assembly.

H. Bolt the spreader to the vehicle frame through the lengths of lumber using the holes located in each of the four (4) cross members. Use 1/2" SAE Grade 5 hardware as required by vehicle application.

I. In addition, secure spreader using four ratchet straps or chain tie down kit (sold separately). Always tighten straps evenly!

- The spreader must be securely fastened to the frame of the vehicle.
- Verify with the vehicle's manufacturer that the factory installed anchor points are designed for tie-down of such load.
- Periodically check that the spreader mounting hardware is securely tightened, retighten if necessary.

CAUTION

Never lift spreader with material in the hopper.

WARNING

Do not drill holes into fuel tanks, fuel lines, thru electrical wiring, etc that may be damaged by drilling.

CAUTION

Inspect straps and hardware after each time spreader is loaded. Tighten straps and hardware if necessary.

WARNING

Important! Do not use ratchet straps or tailgate latch exclusively! Always fasten spreader to the vehicle!

Spinner/Chute Assembly Operation

1. Attach chute to hopper assembly by bolting chute to lower tabs of motor mount. Secure the chute by engaging spring latches into the respective holes. The chute height can be adjusted by attaching the lower chute weldment to the upper using the upper or lower set of holes.

2. The spread pattern and the amount of material dispensed will depend on the following factors:

- Vehicle speed
- Conveyor/Auger speed
- Spinner RPM
- Feed gate door position
- Baffle setting

WARNING

- Make certain area behind spreader is clear before releasing the chute.
- Pinch Point. Keep hands clear when un-latching and latching the rear spinner
- Failure to maintain clearance while releasing the chute may result in serious injury or death!

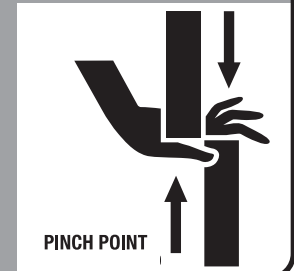
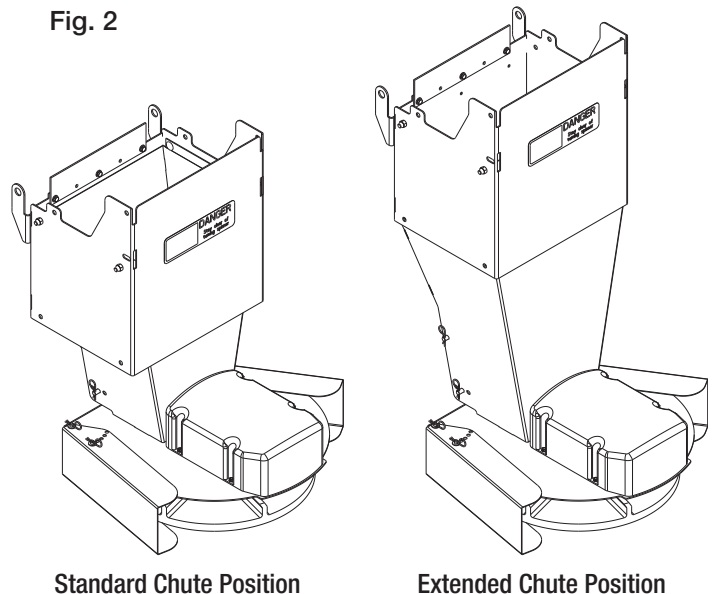


Fig. 2



Control Box and Vehicle Wiring Harness Installation

Note: Make sure you have connected the proper wire color. This is a wire ground electrical system! No Connections to truck's frame or body allowed!

WARNING

Do not drill holes into fuel tanks, fuel lines, through electrical wiring, etc that may be damaged by drilling. To insure good performance of your spreader, check the condition of truck's electrical system. Using digital voltmeter, check alternator and battery voltage. With engine running and head lights and heater fan ON good voltage reading should fall between 13.0 and 15.3 volts. If voltage reading falls out of this range, check and adjust your electric system.

Note: Always disconnect battery before attempting to install electrical components on your vehicle

A. Mount the controller in a convenient location in the truck cab. It is recommended not to mount the controller directly in front of heat vents. Allow ample air space around controller

CAUTION

Do not mount controller in the way of air bag deployment!

- B.** Route both wire harnesses into truck cab through firewall (it maybe necessary to drill holes). Insulate hole to avoid water leaks.
- C.** Insure no wires are nicked or damaged during installation.
- D.** Connect the 4-pin connector on the wire harness to the control box 4-pin connector.
- E.** Connect the 2-pin connector on the power cable to the control box mating connector.
- F.** Connect wire harness single connectors to control box connectors.
- G.** Connect single wire with blade terminal to ignition switch or fuse, controlled by ignition switch. Newer controllers do not require ignition control, wire harness 0203700 should be discarded.

H. Lay out a path for the power cable to the battery, use quick ties to secure power cable. DO NOT CONNECT TO BATTERY AT THIS TIME!

I. Lay out path for wire harness to the rear of the vehicle. Stay clear of the exhaust system. Excess heat can damage the wire harnesses. Use quick ties to secure harness to underbody.

J. Connect the wire harness to the motors and vibrator. Make sure wire colors on wire harness match colors on the motor.

K. Thoroughly clean battery terminals. Make sure battery terminals have no tarnish or corrosion. DO NOT CONNECT WIRE HARNESS TO DAMAGED OR CORRODED TERMINALS! IT MAY RESULT IN OVERHEATING, LOST POWER AND POTENTIAL CONTROLLER DAMAGE! Install the circuit breaker within 12" from the battery.

Connect red wire from cable 3035935 and battery cable 3001379 to circuit breaker according to the breaker markings. Connect the power cable and battery cable directly to the battery. Make sure connection to battery terminals is good and tight. Loose connection to battery terminals will result in sparking, overheating and possible battery damage!

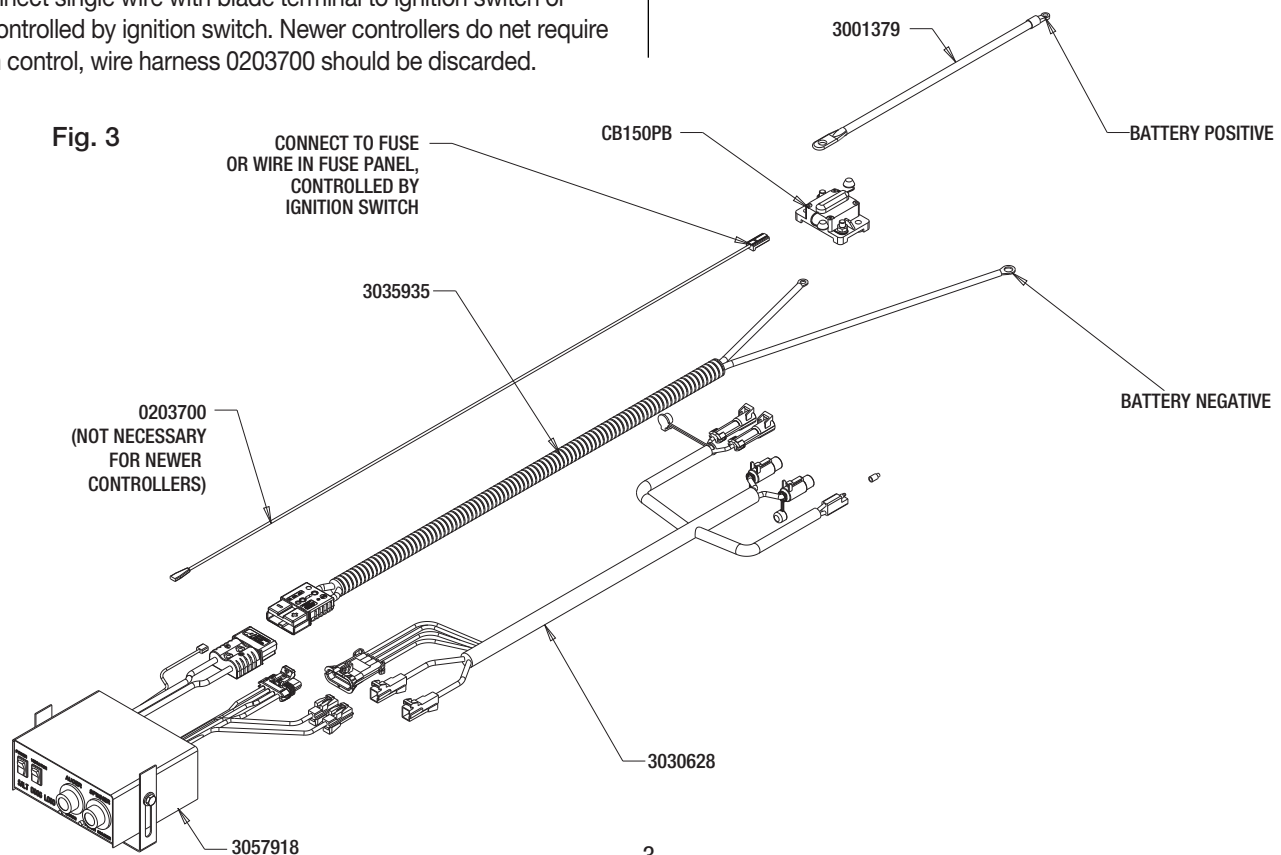
L. Insure all functions of the controller are working properly.

M. Observe auger/ chain moving in proper direction. If direction is wrong reverse wires between Motor and Wire Harness.

N. Optional spot light (5 AMP max) can be installed on spreader. Use utility light kit part number 3018009. Remove cap from single brown capped wire. Connect light to this wire and the trucks frames known ground (negative).

IMPORTANT

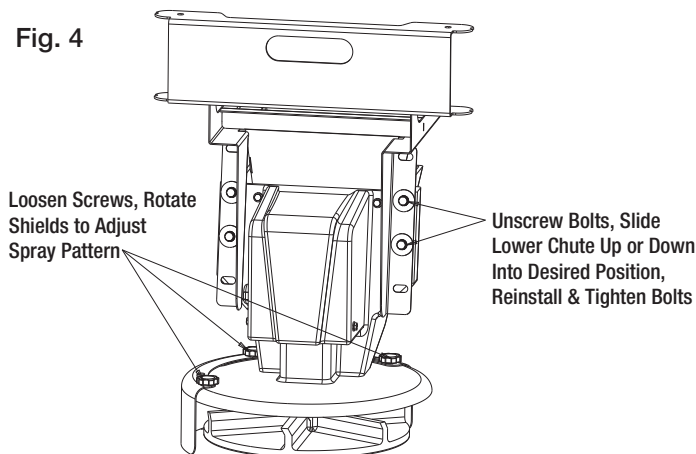
Make sure all wires securely attached to vehicle or spreader. Use wire ties and/or wire clamps to attach wires. All excess wires must be rolled into bundles and attached to vehicle or spreader



Spreader Operation

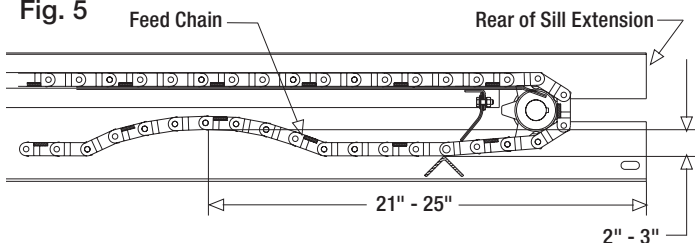
1. Spreader is equipped with a dual independent speed controller. To start spreader, press "POWER" switch. Switch will be illuminated. Auger/ chain and spinner will start rotating. Auger and spinner can be adjusted independently.
2. To activate vibrator press "VIBRATOR" switch, vibrator switch will illuminate. Vibrator can operate continuously for 30 min max with 15 min brakes to avoid overheating.
3. To stop spreader press "ON-OFF" switch again.
4. Spreader controller is equipped with electronic overload and current spike protection. Controller is not serviceable.
5. Spreading pattern can be controlled by repositioning of the baffles on the chute as shown in Fig. 4. Chute heights can be adjusted to accommodate different vehicle heights (Fig.4).

Fig. 4



6. Check the Feed Chain tension periodically. To check the tension, measure in 21"-25" from the rear edge of the gear box mount. Push up on the chain with your hand. The conveyor chain should lift up 2"-3" off the conveyor chain guide or cross angles (Fig. 5).

Fig. 5



WARNING

Never attempt to lift spreader with material in hopper!

WARNING

Never leave material in hopper for extended period of time. Material can freeze, solidify and seriously damage the spreader

Spreader Materials

IMPORTANT

Only use dry salt, sand, sand/salt, or cinder/salt mixes in the spreader. Other materials could cause damage to the machine.

The density of materials that can be loaded into the spreader varies and therefore so will the amount of a given material that can be carried by the spreader before the maximum load rating is reached.

IMPORTANT

When filling the spreader, do not exceed the gross-vehicle-weight rating (GVWR) or gross-axle-weight rating (GAWR).

1. Ensure that the spreader is securely mounted to the vehicle and that the top screen is installed and secured in the hopper.
2. Remove the tarp, if used.
3. Determine the amount of material that you can safely transport using your vehicles GVWR/GAWR and the following table on page 1.
4. Fill the spreader evenly with your material, making sure not to fill past the top of the hopper.

IMPORTANT

Overfilling the hopper could damage the spreader & your vehicle.

Spreader Maintenance

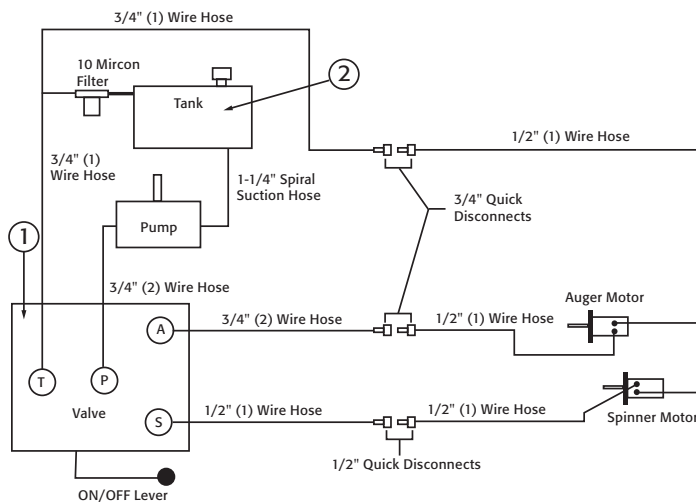
1. Wash spreader after every use. Make sure no material is left under auger/ chain and/or inside trough.
2. Inspect and retighten fasteners after every 5-7 hours of operation.
3. Lubricate bearings every 7-10 hours of operation using general automotive grease.
4. Inspect terminals/connectors every time you disconnect spreader from wire harness. Apply thin layer of dielectric grease on terminals. If any tarnish/corrosion is found, clean terminals and apply dielectric grease.
5. Use dielectric grease on all electrical connectors before an electrical connection is made or after connector is disconnected
6. Empty the spreader of all ice control materials when not in use. Wash out the spreader to prevent material builds up.
7. It is recommended to cover spreader with the tarp during storage periods.

End of Season Maintenance

1. Wash spreader. Make sure no material or residue is left in and outside the hopper.
2. Lubricate bearing using general automotive grease.
3. Inspect wire harness, connectors for broken insulation, missing components. Replace if necessary.
4. Apply dielectric grease on all electrical connectors.
5. Store hopper indoors, in a dry, cool place.
6. Remove controller from truck. Store controller indoors, in a dry cool place.
7. Inspect wire near connectors. Check for broken or missing insulation. Check for tarnished or corroded wires. Trim corroded wires and replace connectors if necessary

Installation Instructions - Hydraulic Models

1. During assembly take precautions to keep all hydraulic components as clean as possible. See the figure below for hydraulic schematic.
 2. Allow enough hose length to prevent kinking and stretching of the hoses and to permit raising the dump body. Support long hoses with wire ties or clamps.
 3. Protect hoses from wear caused by abrasion and/or vibration.
 4. For proper rotation of the auger and spinner motors, hoses may be reversed. The spinner rotates clockwise when looking down from the top.
- Note: Use of a pipe joint sealant compatible with hydraulic oil is recommended for all screw fittings.**
5. Use swivel type hose adapter fitting ends to connect hoses to flow valve. Damage to valve body may occur if the fittings in flow valve are over tightened.
 6. A 10 micron return line filter is recommended to protect the pump, valve, and motors from wear causing contamination.



Valve Key	
T	Tank/Reservoir
P	Pump/Pressure In
A	Auger
S	Spinner

- (1) Single braid wire hose
 (2) Double braid wire hose

Main Components

ITEM	PART NO.	QTY.	DESCRIPTION
1	HV715	1	Dual Flow Regulator Valve
2	-	1	Reservoir 25 Gal Min
N/S	HVC1	1	Dual Flow Regulator Console

Spreader Operation - Hydraulic Models

WARNING

- Before working in or around spreader equipment, be sure all hydraulic controls are moved to OFF position, the PTO must be disengaged (OFF) and the truck engine must be shut off.
- When operating, be sure everyone is standing clear of spreader.
- Be alert for anything that may require shutting down the system.
- Equipment must be started up slowly and watched from a safe distance.

CAUTION

- Always follow the following precautions so as not to cause damage to the spreader.
- If the auger does not move because of dense material or a material jam, with the truck off, remove all material from the hopper and free the auger.
 - To prevent the auger from freezing, do not store material in the spreader.
 - If the material in the hopper freezes, move the spreader into a warm area to thaw.
 - The gearbox is designed to only accept torque from the input shaft. Therefore, **DO NOT ATTEMPT TO FREE THE AUGER BY USING A PIPE OR SIMILAR TOOL TO MOVE OR DISLodge THE AUGER.** This action will void all warranties.

Initial Priming and Inspecting of the System

1. Make certain the spreader hopper is empty
2. Fill oil reservoir approximately 3/4 full using high grade non-foaming hydraulic oil
3. Be certain the manual spreader valve ON/OFF lever is in the OFF position
4. Start the truck engine
5. Engage PTO and circulate hydraulic oil for several minutes to warm up hydraulic system
6. Position manual spreader valve ON/OFF lever to ON position
7. Rotate the auger control knob and spinner control knob on the manual spreader valve to the desired operating position
8. Check the auger and spinner to see that they are working properly and rotating in the correct direction
 - a. To reverse rotation, switch the hydraulic lines at the motor. Only service your spreader when the truck engine is OFF
9. Shut the truck engine OFF
10. Inspect hydraulic system for leaks
11. Refill oil reservoir to 3/4 full
12. Hydraulic system is now be ready for use

Spreader Start-up

1. Set feed gate opening and baffle positions for desired material flow and spread pattern.
2. Check to make certain that no loose parts or other material are in hopper, chute or on the spinner disk
3. Warm up the hydraulic system
 - a. Start the truck engine
 - b. Engage PTO and circulate hydraulic oil for several minutes
 - c. Position manual spreader valve ON/OFF lever to ON position
 - d. Rotate the auger control knob and spinner control knob on the manual spreader valve to the desired operating position
 - e. Move the ON/OFF lever to the OFF position after warming up the system. Position the spinner and auger control knobs to the desired settings
4. Put spreading material in the V-Box.
5. Changing the auger and spinner speeds as well as adjusting the feed gate and baffle positions will produce various spread patterns.

Operating the Spreader

1. Adjust the internal and external spinner baffles to positions that you have previously determined to give you desired spread pattern.
2. Before each use, warm up the hydraulic system following the procedure described in the Initial Spreader Setup section
3. Valve setting changes may be made with truck in motion
4. Allow Manual Spreader Valve to cool down before moving ON/OFF lever to the OFF position.
5. Moving the Manual Spreader Valve to the OFF position will stop the spinner and auger at the same time without changing their knob/valve settings

CAUTION

Position the valve on/off control lever in the off position when the spreader is not in use or is removed. In the event the valve on/off control lever is left in the on position, a heat problem may occur as the pump continues to pump oil to the hydraulic valve. This could cause a hose to burst spraying hot oil.

Spreader Maintenance

In-Season Maintenance

1. Wash spreader after every use. Make sure no material is left under auger/ chain and/or inside trough.
2. Inspect and retighten fasteners after every 7-10 hours of operation. Replace any loose or damaged fasteners.
3. Lubricate your spreader every 7-10 hours of operation and/or following every snow event using a lithium NLGI #2 rated general purpose marine grade grease.
 - a. Idler Shaft Bearings (2)
 - b. Drive Shaft Bearing (1)
 - c. Feed Gate Jack
 - d. Gearbox Input Shaft (if equipped with a fitting)

- e. Check the gearbox oil level and maintain the proper 3/4 full level by adding the appropriate lubricant. Use care to keep contaminants from getting in reservoir when checking and filling.
4. Maintain the oil reservoir approximately 3/4 full using high grade non-foaming hydraulic oil
5. If applicable, use dielectric grease on all electrical connectors before an electrical connection is made or after connector is disconnected
6. It is recommended to cover spreader with the tarp during storage periods.

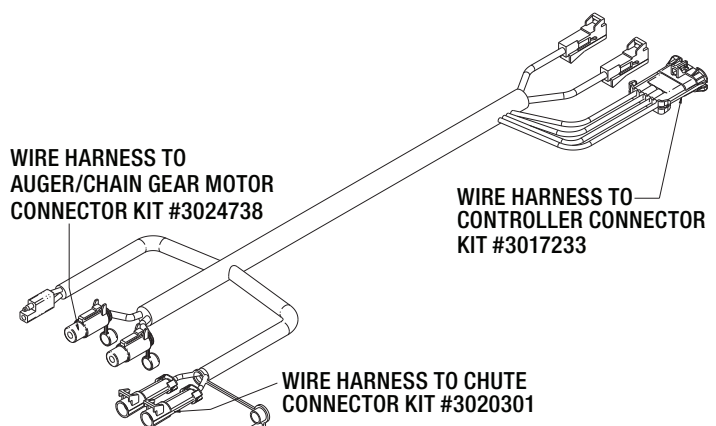
End of Season / Off-Season Storage Maintenance

1. Wash spreader. Make certain no material or residue is left in or outside the hopper. Thoroughly dry all metal surfaces. Repaint and oil all previously painted surfaces and auger to protect from rust.
2. Lubricate all bearings (see list above) using lithium NLGI #2 rated general purpose marine grade grease
3. If applicable, inspect wire near connections checking for broken or missing insulation or corroded wires. Trim corroded wires and replace connectors if necessary. Apply dielectric grease on all electrical connections.
4. Store hopper indoors, in a cool, dry place.
5. If applicable, remove controller from truck. Store controller indoors, in a cool, dry place

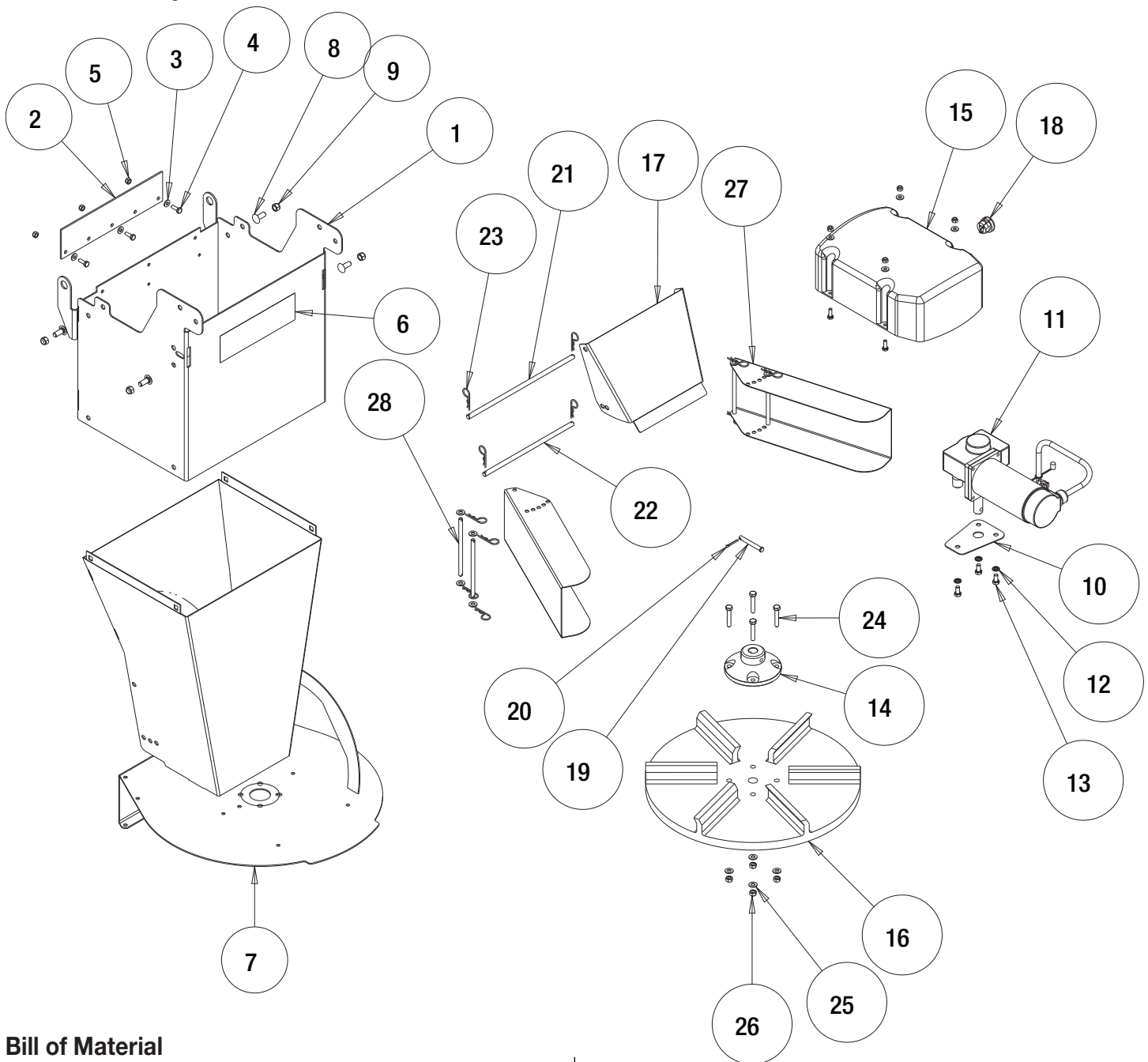
Summer Storage

1. Apply dielectric grease or similar protective compound on all electrical connectors & protect them with caps before storage.
2. Disconnect and remove speed controller from vehicle and store it in dry and cool place. Protect controller from excessive heat and moisture.
3. Clean hopper and trough from all kinds of debris.
4. Remove, thoroughly lubricate and reinstall trough bearing.
5. Protect hopper from excessive temperatures during summer storage,

Connector Kit Drawing



Chute Assembly - Electric Drive

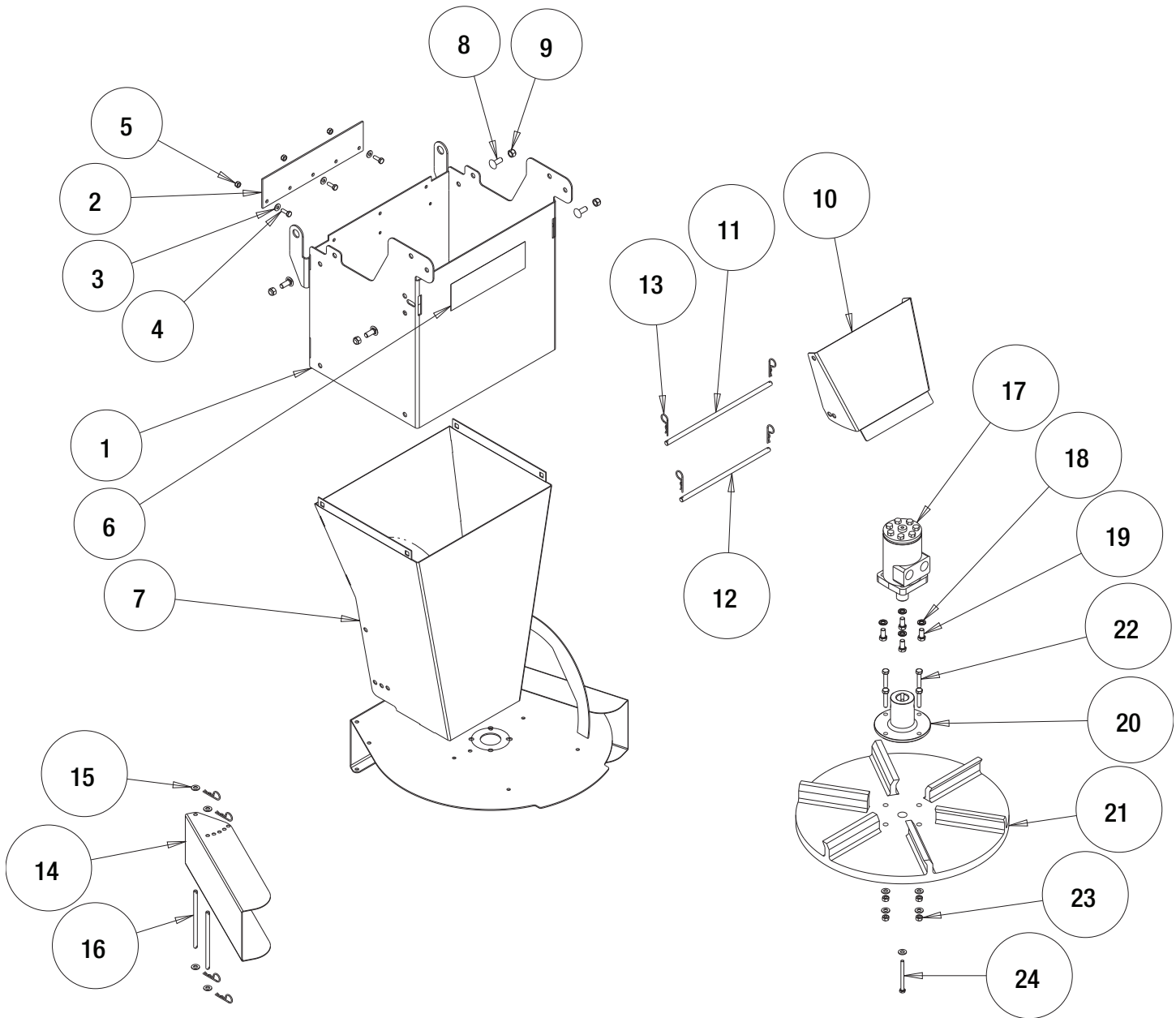


Bill of Material

ITEM	PART NO.	QTY.	DESCRIPTION
1	3030392	1	UPPER CHUTE WELDMENT
2	1410241	1	WIPER BELT, HOPPER
3	FWF025063007SS	7	WASHER, FLAT 1/4 SAE SS
4	FCS025020075SS	7	SCREW, CAP 1/4-20 X 3/4 SST
5	FNE025020031SS	7	NUT, NYLON INSERT 1/4-20 SST
6	9240131	1	DECAL #1, DANGER STAY CLEAR
7	3030420	1	CHUTE LOWER WELDMENT
8	3014960	4	BOLT, 3/8-16 X 1 CARRIAGE SHORT NECK SST
9	FNE038016044SS	4	NUT, NYLOCK 3/8-16 X 7/16 SST
10	3007824	1	RETAINER GEARMOTOR, CHUTE
11	3030222	1	GEAR MOTOR .4 HP SPINNER
12	FWL031058008SS	3	WASHER, 5/16 LOCK SST
13	FCS031018063SS	3	SCREW, HHC 5/16-18 X 5/8 SST
14	3030182	1	HUB, SPINNER POLY

ITEM	PART NO.	QTY.	DESCRIPTION
15	3030575	1	ENCLOSURE, GEAR MOTOR CHUTE
16	3030179	1	SPINNER 18" POLY CW
17	3030579	1	BAFFLE, CHUTE
18	3025065	1	BUSHING STRAIN RELIEF
19	3007113	1	PIN, CLEVIS, 5/16 X 2-1/2, .141 HOLE ZN
20	3014994	1	PIN, COTTER, 1/8IN X 1IN SST
21	3030580	1	PIN, BAFFLE ATTACHMENT
22	3030581	1	PIN, BAFFLE ADJUSTMENT
23	3001257	12	PIN, HAIR COTTER STAINLESS STL
24	FCS031018175SS	4	SCREW, HHC 5/16-18 X 1 3/4 SS
25	FWF031075006SS	12	WASHER, 5/16 SAE SST
26	FNE031018034SS	4	NUT, NYLOCK 5/16-18 SS
27	3031025	2	BAFFLE CHUTE ADJUST
28	3031051	4	PIN BAFFLE CHUTE

Chute Assembly - Hydraulic Drive

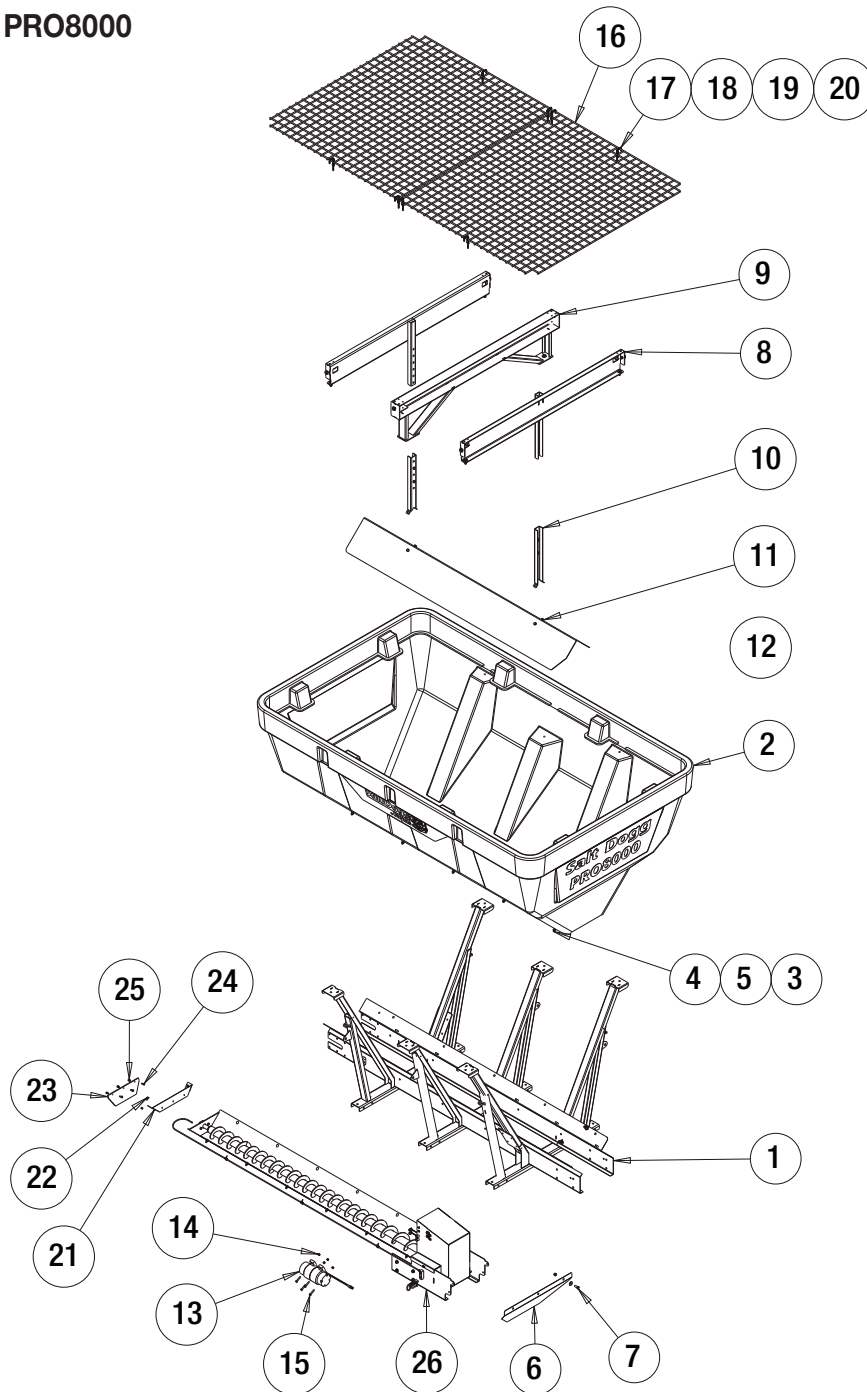


Bill of Material

ITEM	PART NO.	QTY.	DESCRIPTION
1	3030392	1	UPPER CHUTE WELDMENT
2	1410241	1	WIPER BELT, HOPPER
3	FWF025063007SS	3	WASHER, FLAT 1/4 SAE SS
4	FCS025020075SS	3	SCREW, CAP 1/4-20 X 3/4 SST
5	FNE025020031SS	3	NUT, NYLON INSERT 1/4-20 SST
6	9240131	1	DECAL #1, DANGER STAY CLEAR
7	3030420	1	CHUTE LOWER WELDMENT
8	3014960	4	BOLT, 3/8-16 X 1 CARRIAGE SHORT NECK SST
9	FNE038016044SS	4	NUT, NYLOCK 3/8-16 X 7/16 SST
10	3030579	1	BAFFLE, CHUTE
11	3030580	1	PIN, BAFFLE ATTACHMENT
12	3030581	1	PIN, BAFFLE ADJUSTMENT

ITEM	PART NO.	QTY.	DESCRIPTION
13	3001257	12	PIN, HAIR COTTER STAINLESS STL
14	3031025	2	BAFFLE CHUTE ADJUST
15	FWF031075006SS	13	WASHER, 5/16 SAE SST
16	3031051	4	PIN BAFFLE CHUTE
17	CM004P	1	MOTOR, HYD 4 BOLT
18	FWL038069009SS	4	WASHER, LOCK RHS-3/8 SST
19	FCS038016075SS	4	SCREW, HHC-3/8-16 X 3/4 SST
20	3008632	1	HUB, LONG NECK SPINNER
21	3030179	1	SPINNER 18" POLY CW
22	FCS031018150SS	4	SCREW, HHC 5/16-18 X 1.5 SST
23	FNE031018034SS	4	NUT, NYLOCK 5/16-18 SS
24	3013623	1	SCREW HH CAP 1/4-20 X 3.0 SST

Hopper Assembly - PRO8000

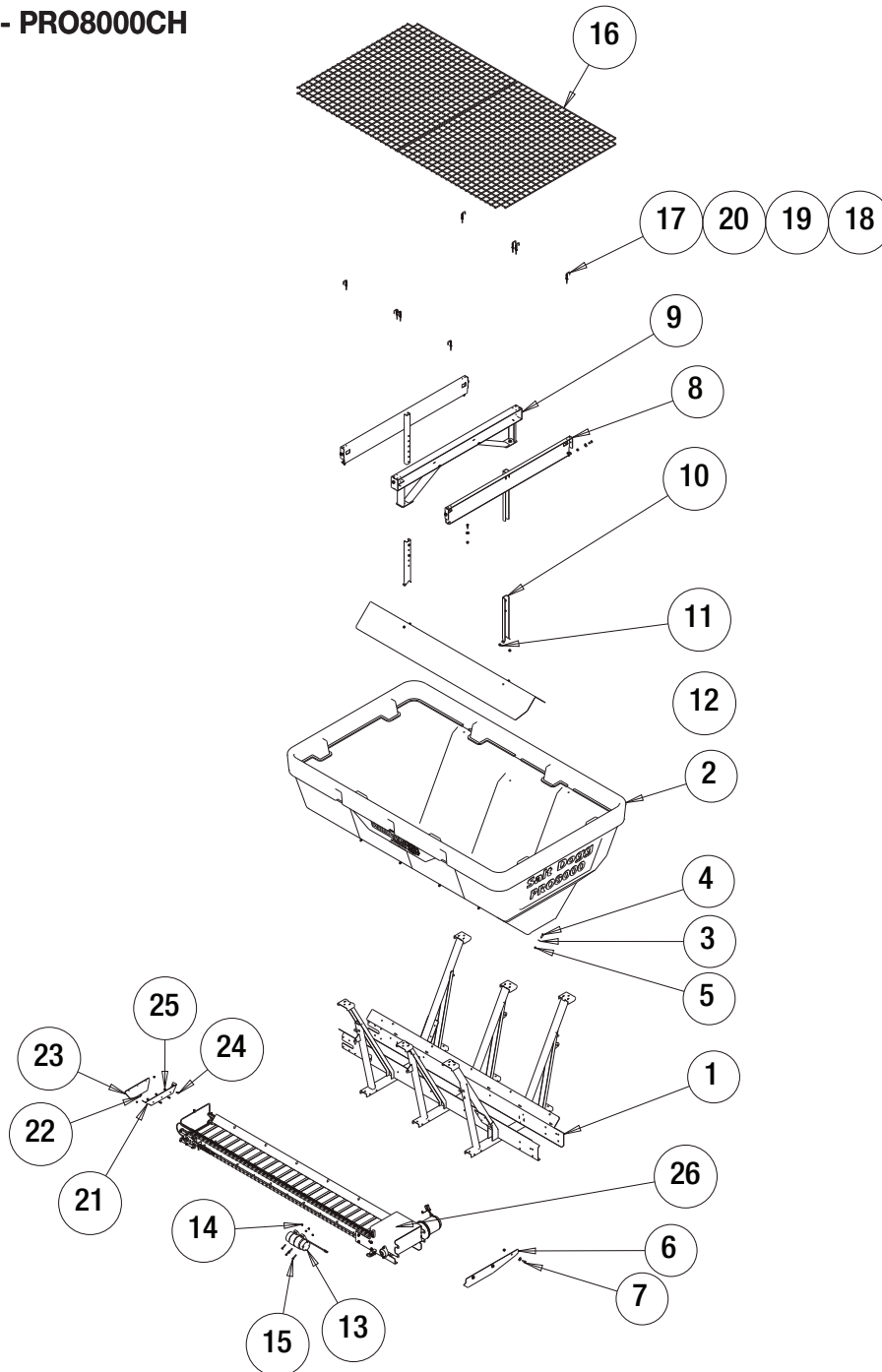


Bill of Material

ITEM	PART NO.	QTY.	DESCRIPTION
1	3057474	1	TROUGH WELDMENT 10FT
2	3057471	1	HOPPER POLY 8 CU YD
3	3000269	25	WASHER, FLAT 1/2 USS, SST
4	FCS050013150SS	22	SCREW, HHC-1/2-13 X 1.50 SST
5	FNE050013053SS	33	NUT, NYLOCK, 1/2-13, SST WAX
6	3062883	1	FLOW RESTRICTOR
7	FCS050013125SS	3	SCREW, HHC-1/2-13 X 1-1/4 SST
8	3057483	2	CROSS MEMBER, VEE SUPPORT
9	3057482	1	CROSS MEMBER WELDMENT
10	3017731	2	HANGER, INVERTED VEE
11	FCS050013100SS	8	SCREW, HHC-1/2-13 X 1 SST
12	3063672	1	DEFLECTOR, INVERTED VEE
13	3019166	1	VIBRATOR 900 LBS 12 VDC

ITEM	PART NO.	QTY.	DESCRIPTION
14	FNE038016044SS	6	NUT, NYLOCK, 3/8-16, SST WAX
15	3007066	4	SCREW, HHC-3/8-16 X 2 SST
16	3057751	2	WIRE MESH PRO8000
17	3054283	8	LOCK PIN, SCREEN
18	FPC009000075SS	8	PIN, COTTER 3/32 X 3/4 STAINLESS
19	FWF025063007SS	8	WASHER, FLAT 1/4 SAE SS
20	3054284	8	SPRING, LOCK PIN
21	3057621	1	BRACKET, VIPER BELT
22	FCS038016075SS	2	SCREW, HHC-3/8-16 X 3/4 SST
23	3050273	1	WIPER BELT, FRONT, MID SIZE
24	3018701	3	SCREW, HHC 5/16-18 X 1.0 SST FULL THD
25	FNE031018034SS	3	NUT, NYLOCK, 5/16-18, SST WAX
26	3057622	1	DRIVE AUGER, PRO8000, 12 VDC

Hopper Assembly - PRO8000CH

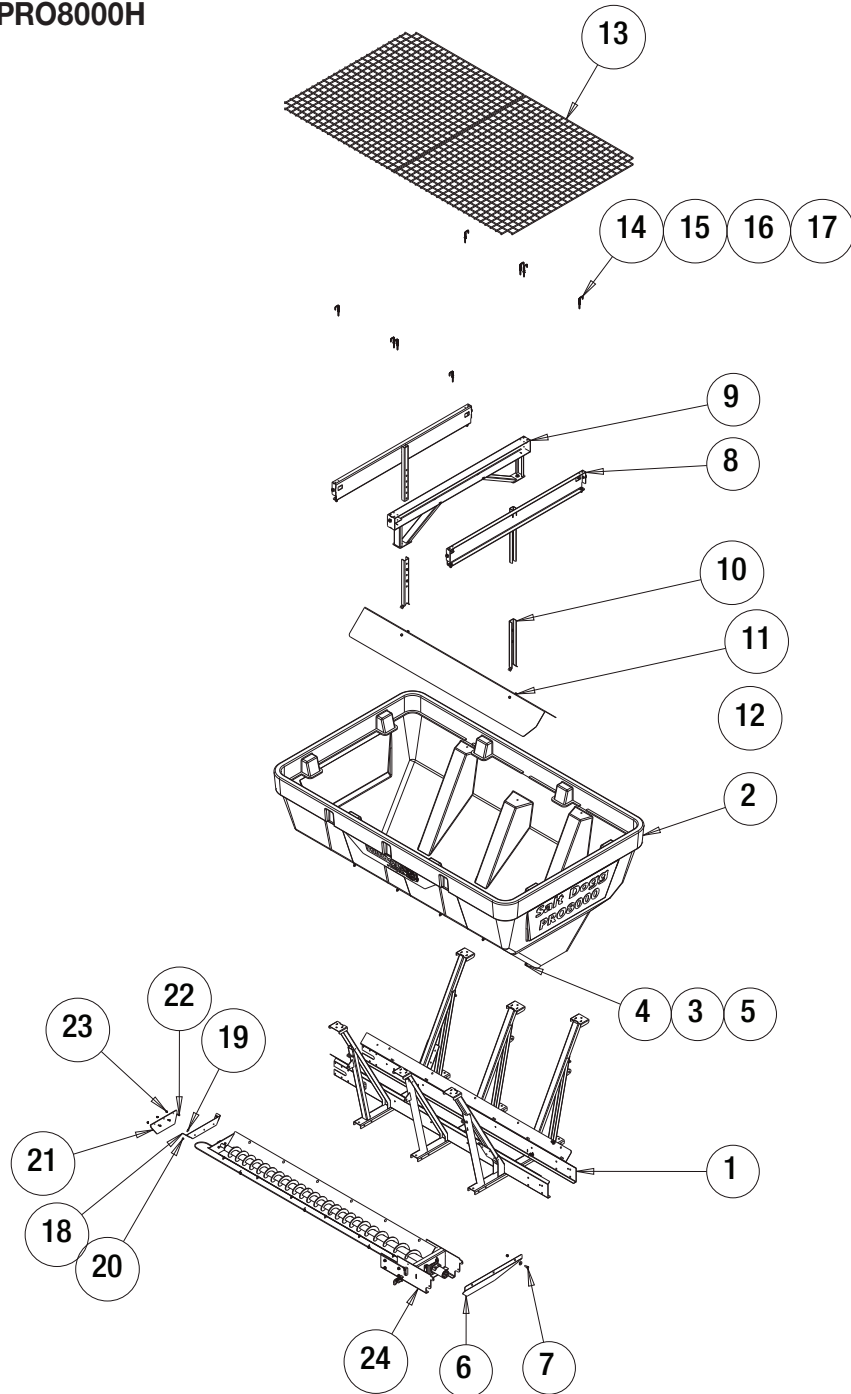


Bill of Material

ITEM	PART NO.	QTY.	DESCRIPTION
1	3057474	1	TROUGH WELDMENT 10FT
2	3057471	1	HOPPER POLY 8 CU YD
3	3000269	25	WASHER, FLAT 1/2 USS, SST
4	FCS050013150SS	22	SCREW, HHC-1/2-13 X 1.50 SST
5	FNE050013053SS	33	NUT, NYLOCK, 1/2-13, SST WAX
6	3062883	1	FLOW RESTRICTOR
7	FCS050013125SS	3	SCREW, HHC-1/2-13 X 1-1/4 SST
8	3057483	2	CROSS MEMBER, VEE SUPPORT
9	3057482	1	CROSS MEMBER WELDMENT
10	3017731	2	HANGER, INVERTED VEE
11	FCS050013100SS	8	SCREW, HHC-1/2-13 X 1 SST
12	3063672	1	DEFLECTOR, INVERTED VEE
13	3019166	1	VIBRATOR 900 LBS 12 VDC

ITEM	PART NO.	QTY.	DESCRIPTION
14	FNE038016044SS	6	NUT, NYLOCK, 3/8-16, SST WAX
15	3007066	4	SCREW, HHC-3/8-16 X 2 SST
16	3057751	2	WIRE MESH PRO8000
17	3054283	8	LOCK PIN, SCREEN
18	FPC009000075SS	8	PIN, COTTER 3/32 X 3/4 STAINLESS
19	FWF025063007SS	8	WASHER, FLAT 1/4 SAE SS
20	3054284	8	SPRING, LOCK PIN
21	3057621	1	BRACKET, VIPER BELT
22	FCS038016075SS	2	SCREW, HHC-3/8-16 X 3/4 SST
23	3050273	1	WIPER BELT, FRONT, MID SIZE
24	3018701	3	SCREW, HHC 5/16-18 X 1.0 SST FULL THD
25	FNE031018034SS	3	NUT, NYLOCK, 5/16-18, SST WAX
26	3057486	1	DRIVE CHAIN PRO8000, 12VDC

Hopper Assembly - PRO8000H

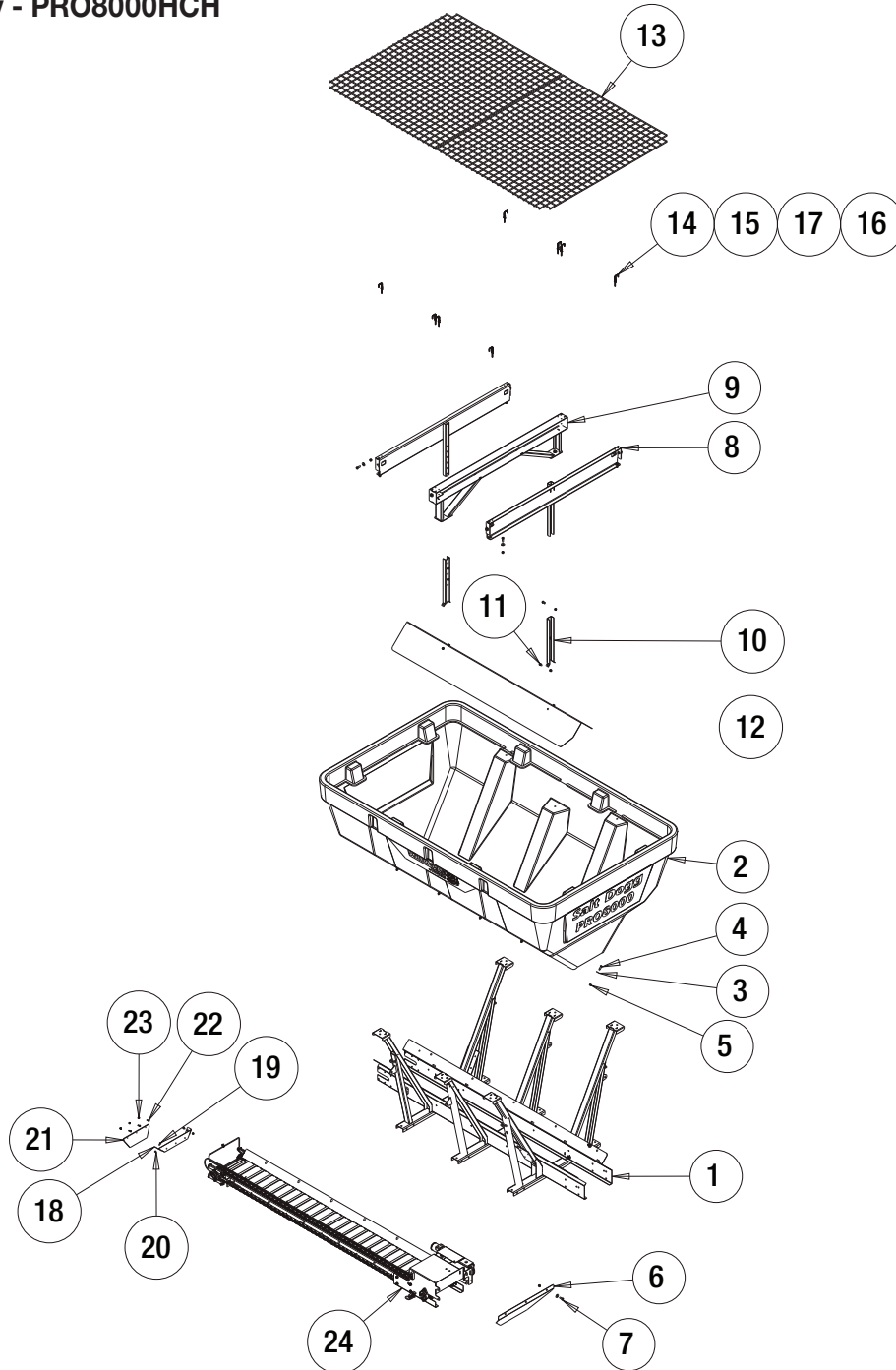


Bill of Material

ITEM	PART NO.	QTY.	DESCRIPTION
1	3057474	1	TROUGH WELDMENT 10FT
2	3057471	1	HOPPER POLY 8 CU YD
3	3000269	25	WASHER, FLAT 1/2 USS, SST
4	FCS050013150SS	22	SCREW, HHC-1/2-13 X 1.50 SST
5	FNE050013053SS	33	NUT, NYLOCK, 1/2-13, SST WAX
6	3062883	1	FLOW RESTRICTOR
7	FCS050013125SS	3	SCREW, HHC-1/2-13 X 1-1/4 SST
8	3057483	2	CROSS MEMBER, VEE SUPPORT
9	3057482	1	CROSS MEMBER WELDMENT
10	3017731	2	HANGER, INVERTED VEE
11	FCS050013100SS	8	SCREW, HHC-1/2-13 X 1 SST
12	3063672	1	DEFLECTOR, INVERTED VEE

ITEM	PART NO.	QTY.	DESCRIPTION
13	3057751	2	WIRE MESH PRO8000
14	3054283	8	LOCK PIN, SCREEN
15	FPC009000075SS	8	PIN, COTTER 3/32 X 3/4 STAINLESS
16	FWF025063007SS	8	WASHER, FLAT 1/4 SAE SS
17	3054284	8	SPRING, LOCK PIN
18	3057621	1	BRACKET, VIPER BELT
19	FCS038016075SS	2	SCREW, HHC-3/8-16 X 3/4 SST
20	FNE038016044SS	2	NUT, NYLOCK, 3/8-16, SST WAX
21	3050273	1	WIPER BELT, FRONT, MID SIZE
22	3018701	3	SCREW, HHC 5/16-18 X 1.0 SST FULL THD
23	FNE031018034SS	3	NUT, NYLOCK, 5/16-18, SST WAX
24	3060886	1	DRIVE AUGER, PRO8000, HYD

Hopper Assembly - PRO8000HCH

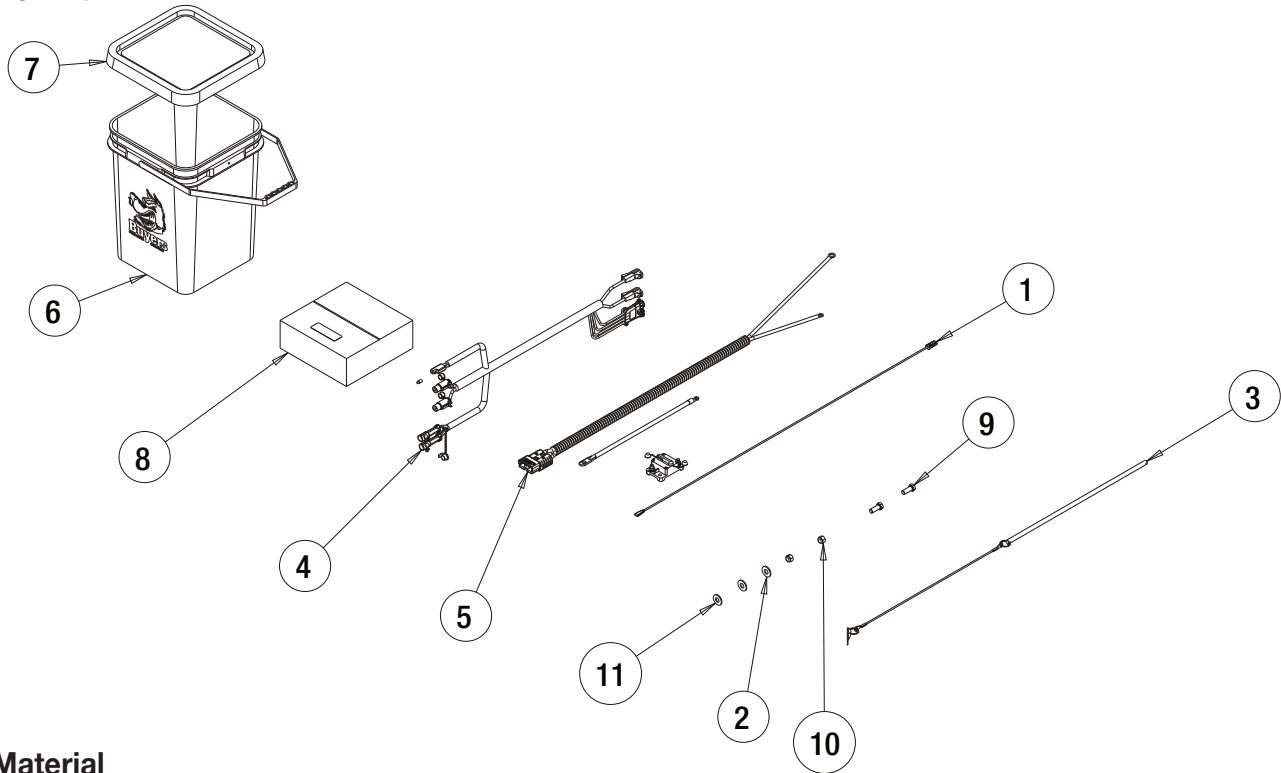


Bill of Material

ITEM	PART NO.	QTY.	DESCRIPTION
1	3057474	1	TROUGH WELDMENT 10FT
2	3057471	1	HOPPER POLY 8 CU YD
3	3000269	25	WASHER, FLAT 1/2 USS, SST
4	FCS050013150SS	22	SCREW, HHC-1/2-13 X 1.50 SST
5	FNE050013053SS	33	NUT, NYLOCK, 1/2-13, SST WAX
6	3062883	1	FLOW RESTRICTOR
7	FCS050013125SS	3	SCREW, HHC-1/2-13 X 1-1/4 SST
8	3057483	2	CROSS MEMBER, VEE SUPPORT
9	3057482	1	CROSS MEMBER WELDMENT
10	3017731	2	HANGER, INVERTED VEE
11	FCS050013100SS	8	SCREW, HHC-1/2-13 X 1 SST
12	3063672	1	DEFLECTOR, INVERTED VEE

ITEM	PART NO.	QTY.	DESCRIPTION
13	3057751	2	WIRE MESH PRO8000
14	3054283	8	LOCK PIN, SCREEN
15	FPC009000075SS	8	PIN, COTTER 3/32 X 3/4 STAINLESS
16	FWF025063007SS	8	WASHER, FLAT 1/4 SAE SS
17	3054284	8	SPRING, LOCK PIN
18	3057621	1	BRACKET, VIPER BELT
19	FCS038016075SS	2	SCREW, HHC-3/8-16 X 3/4 SST
20	FNE038016044SS	2	NUT, NYLOCK, 3/8-16, SST WAX
21	3050273	1	WIPER BELT, FRONT, MID SIZE
22	3018701	3	SCREW, HHC-5/16-18 X 1.0 SST FULL THD
23	FNE031018034SS	3	NUT, NYLOCK, 5/16-18, SST WAX
24	3060502	1	DRIVE CHAIN, PRO8000, HYD

Controller Kit

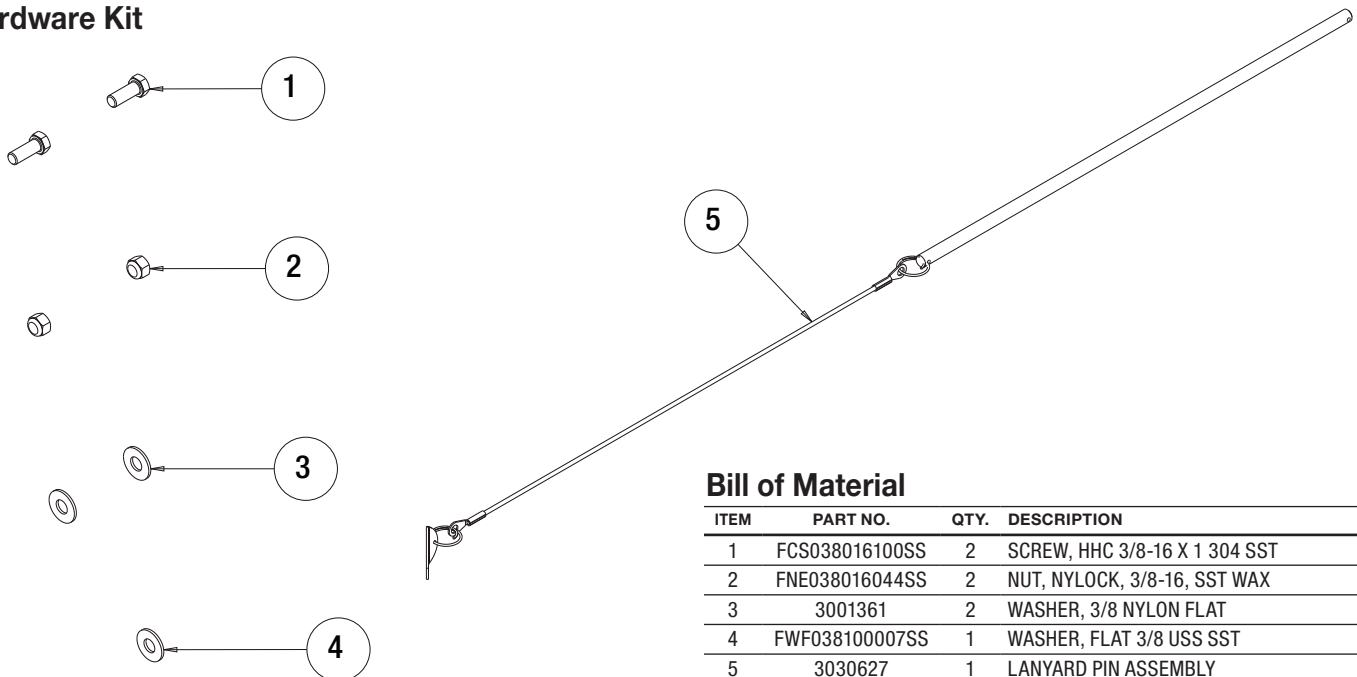


Bill of Material

ITEM	PART NO.	QTY.	DESCRIPTION
1	0203700	1	WIRE ASSEMBLY, 36 LONG
2	3001361	2	WASHER, 3/8 NYLON FLAT
3	3030627	1	LANYARD PIN ASSEMBLY
4	3030628	1	WIRE HARNESS MAIN
5	3035938	1	KIT POWER CABLE REPLACES 3016943
6	3055030	1	BUCKET, SALTDogg PARTS

ITEM	PART NO.	QTY.	DESCRIPTION
7	3056767	1	LID, BUCKET, SALTDogg PARTS
8	3057918	1	CONTROLLER, HIGH CURRENT, SPREADER 2CH
9	FCS038016100SS	2	SCREW, HHC 3/8-16 X 1 304 SST
10	FNE038016044SS	2	NUT, NYLOCK, 3/8-16, SST WAX
11	FWF038100007SS	1	WASHER, FLAT 3/8 USS SST

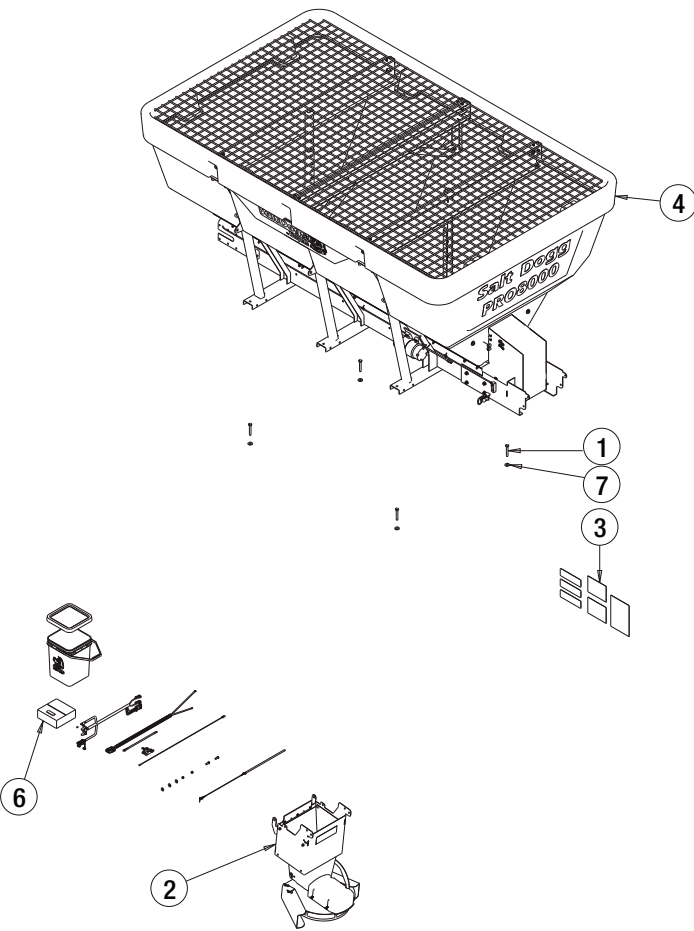
Hardware Kit



Bill of Material

ITEM	PART NO.	QTY.	DESCRIPTION
1	FCS038016100SS	2	SCREW, HHC 3/8-16 X 1 304 SST
2	FNE038016044SS	2	NUT, NYLOCK, 3/8-16, SST WAX
3	3001361	2	WASHER, 3/8 NYLON FLAT
4	FWF038100007SS	1	WASHER, FLAT 3/8 USS SST
5	3030627	1	LANYARD PIN ASSEMBLY

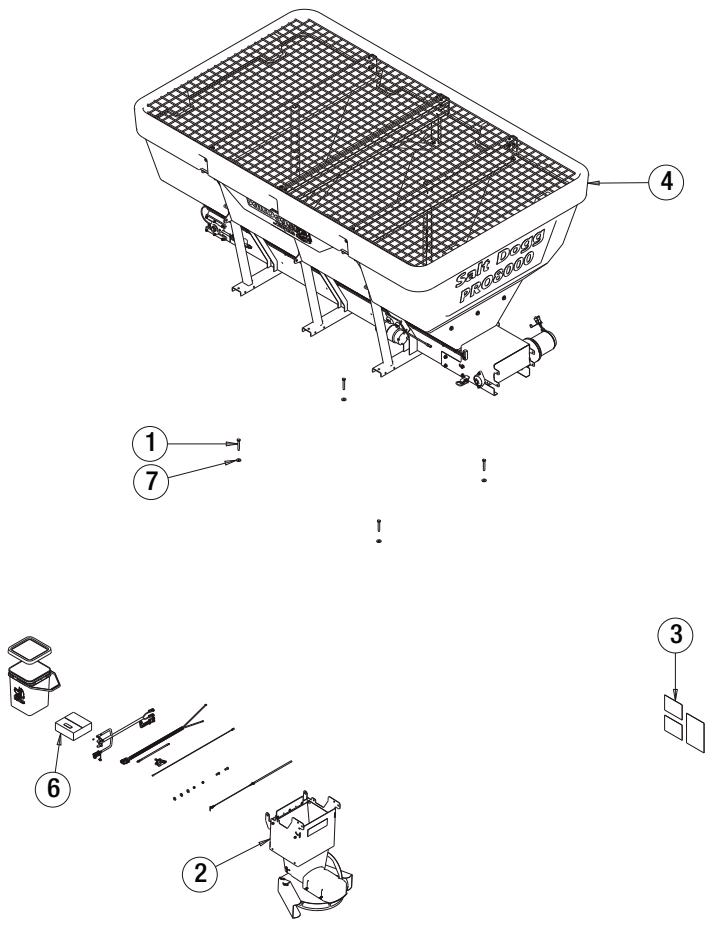
PRO8000



Bill of Material

ITEM	PART NO.	QTY.	DESCRIPTION
1	3010850	4	SCREW, HEX HD LAG, 1/2 X 4.0, ZN
2	3030391	1	CHUTE ADJUSTABLE ELECTRO, SST
3	3056126	1	DECAL KIT, MID X, AUGER, UNBRANDED
4	3060505	1	HOPPER ASSEMBLY PRO8000
5	3060888	1	PALLET SHIPPING PRO8000
6	3060889	1	CONTROLLER KIT, PRO8000, PRO8000CH
7	FWF050138014	4	WASHER, FLAT, 1/2" USS, ZN

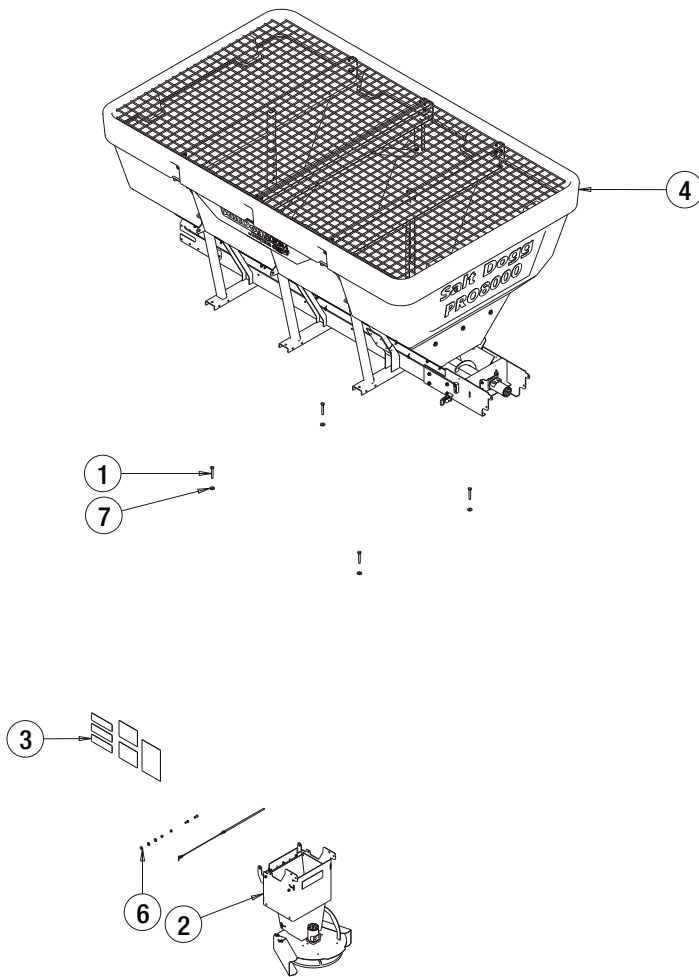
PRO8000CH



Bill of Material

ITEM	PART NO.	QTY.	DESCRIPTION
1	3010850	4	SCREW, HEX HD LAG, 1/2 X 4.0, ZN
2	3030391	1	CHUTE ADJUSTABLE ELECTRO, SST
3	3056125	1	DECAL KIT, MID X, CHAIN, UNBRANDED
4	3060504	1	HOPPER ASSEMBLY PRO8000CH
5	3060888	1	PALLET SHIPPING PRO8000
6	3060889	1	CONTROLLER KIT, PRO8000, PRO8000CH
7	FWF050138014	4	WASHER, FLAT, 1/2" USS, ZN

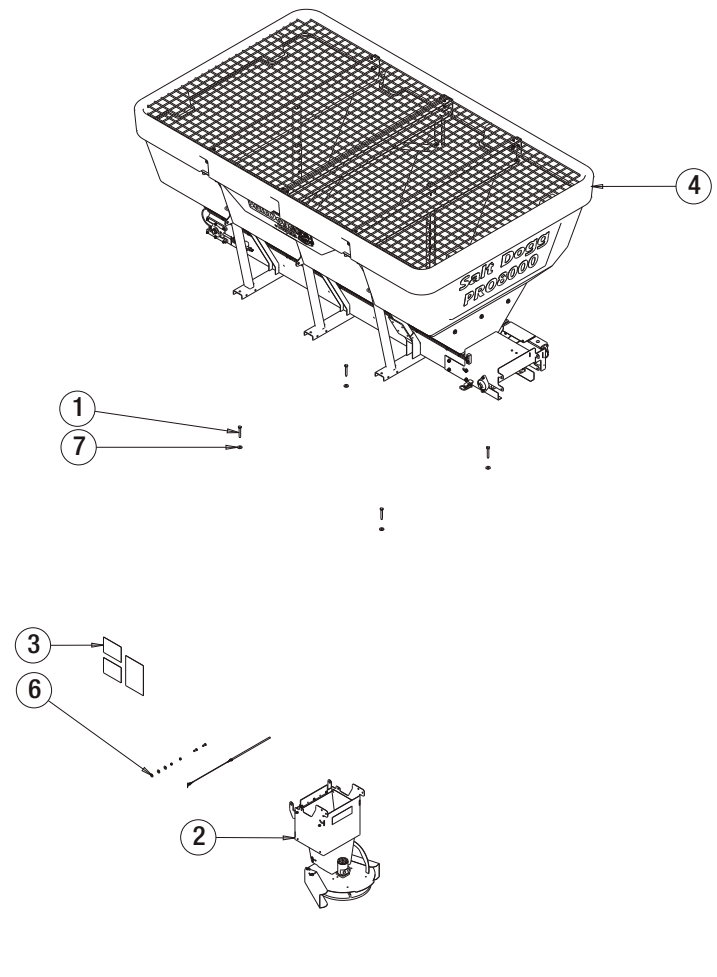
PRO8000H



Bill of Material

ITEM	PART NO.	QTY.	DESCRIPTION
1	3010850	4	SCREW,HEX HD LAG,1/2 X4.0, ZN
2	3031074	1	CHUTE ADJUSTABLE HYD, SST
3	3056126	1	DECAL KIT, MID X, AUGER, UNBRANDED
4	3060887	1	HOPPER ASSEMBLY PRO8000H
5	3060888	1	PALLET SHIPPING PRO8000
6	3060890	1	HARDWARE KIT, PRO8000H,PRO8000HCH
7	FWF050138014	4	WASHER, FLAT, 1/2" USS, ZN

PRO8000HCH



Bill of Material

ITEM	PART NO.	QTY.	DESCRIPTION
1	3010850	4	SCREW,HEX HD LAG,1/2 X4.0, ZN
2	3031074	1	CHUTE ADJUSTABLE HYD, SST
3	3056125	1	DECAL KIT, MID X, CHAIN, UNBRANDED
4	3060503	1	HOPPER ASSEMBLY PRO8000HCH
5	3060888	1	PALLET SHIPPING PRO8000
6	3060890	1	HARDWARE KIT, PRO8000H,PRO8000HCH
7	FWF050138014	4	WASHER, FLAT, 1/2" USS, ZN

PRO SERIES SPREADER WARRANTY INFORMATION

This warranty replaces all previous warranties and no employee of this company is authorized to extend additional warranties, or agreements, or implications not explicitly covered herein.

Buyers Products Company warrants all parts of the product to be free from defects in material and workmanship for a period of two (2) years. Parts must be properly installed and used under normal conditions. Normal wear is excluded.

Any part, which has been altered, including modifications, misuse, accident, or lack of maintenance will not be considered under this warranty.

The sole responsibility of Buyers Products Company under this warranty is limited to repairing or replacing any part(s), which are returned, prepaid, 30 days after such defect is discovered, and returned part(s) are found to be defective by Buyers Products Company.

Authorization from Buyers Products Company must be obtained before returning any part. The following information must accompany defective parts returned to Buyers Products Company: RMA #, spreader model, serial number, date installed, and distributor from whom purchased.

Buyers Products Company shall not be liable for damage arising out of failure of any unit to operate properly, or failure, or delay in work, or for any consequential damages. No charges for transportation or labor performed on any part will be allowed under this warranty.